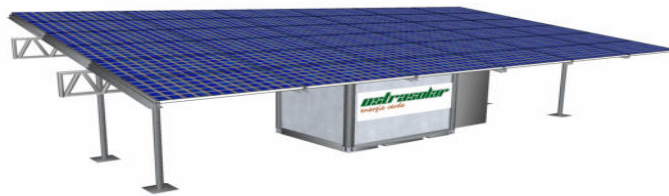


base equipment in 1,0	Basa equipment in 1,0+
<b>Everything at a glance</b>	
<ul style="list-style-type: none"> <li>Pichsize 17,0 x 6,0 = 102,0m<sup>2</sup></li> </ul>	<ul style="list-style-type: none"> <li>Pichsize 17,0 x 6,0 = 102,0m<sup>2</sup></li> </ul>
<ul style="list-style-type: none"> <li>Three phase system 230V / 400V with pure sinus wave</li> </ul>	<ul style="list-style-type: none"> <li>Three phase system 230V / 400V with pure sinus wave</li> </ul>
<ul style="list-style-type: none"> <li>Remote monitoring is possible with existing online access</li> </ul>	<ul style="list-style-type: none"> <li>Remote monitoring is possible with existing online access</li> </ul>
<ul style="list-style-type: none"> <li>LiFePo4 battery technology inside</li> </ul>	<ul style="list-style-type: none"> <li>LiFePo4 battery technology inside</li> </ul>
<ul style="list-style-type: none"> <li>Battery base 19,4kWh 51,5V / 400AH</li> </ul>	<ul style="list-style-type: none"> <li>Batterypower 29,1kWh 51,5V / 600AH</li> </ul>
<ul style="list-style-type: none"> <li>One control system</li> </ul>	<ul style="list-style-type: none"> <li>One control system</li> </ul>
<ul style="list-style-type: none"> <li>Maximum PV input power 14,5 kWp</li> </ul>	<ul style="list-style-type: none"> <li>Maximum PV input power 14,5 kWp</li> </ul>
<ul style="list-style-type: none"> <li>Continuous output power: 10kWh</li> </ul>	<ul style="list-style-type: none"> <li>Continuous output power: 10kWh</li> </ul>
<ul style="list-style-type: none"> <li>Modules are polycrystalline with 54 * 270 Wp (Number of modules are calculatet in sizing tool)</li> </ul>	<ul style="list-style-type: none"> <li>Modules are polycrystalline with 54 * 270 Wp (Number of modules are calculatet in sizing tool)</li> </ul>
<ul style="list-style-type: none"> <li>Including the necessary substructure for the modules.</li> </ul>	<ul style="list-style-type: none"> <li>Including the necessary substructure for the modules.</li> </ul>
<ul style="list-style-type: none"> <li>2 Powersafe 1,0 can be transported in a 20ft container. System weight: 3000KG</li> </ul>	<ul style="list-style-type: none"> <li>2 Powersafe 1,0 can be transported in a 20ft container. System weight: 3050KG</li> </ul>
<ul style="list-style-type: none"> <li>Fuses, cables, according DIN, VDE, TUV, ISO</li> <li>German engineers, European products = 100% quality</li> </ul>	
<p>In relation to the energy demand, the system is freely extensible and customizable to the needs of customers. For this purpose, the individual boxes can be configured in clusters.</p>	



## Base safe

The safe is 2850 mm x 2300 mm x 2220 mm

- Isolated Box
- Air-conditioned
- LiFePo4 battery technology
- The necessary substructure is also Including
- Batteries are fully charged, electrical installation checked and ready

## Special equipment and services

- ☐ Delivery to .....
- ☐ Constructed and connected in.....
- ☐ Power supply with and without generator or net
- ☐ remote maintenance
- ☐ Desalination plants for drinking water treatment
- ☐ Hybrid modules for cooling the PV and production / storage of warm water
- ☐ Pumping equipment including cables and Computerized "droplets" – irrigation
- ☐ \_\_\_\_\_
- ☐ \_\_\_\_\_
- ☐ \_\_\_\_\_